

UMTS | HSPA+ 5.76/14.4



HE 920 Family

Embedded



- Ultra Compact
- Telit Unified AT Command Set
- LGA Package
- Designed for Automotive Applications
- eCall
- Multi Band
- RX Diversity
- Tri Band UHS UMTS | HSPA 14.4
- 4 EDG Quad Band EDGE
- 4 GPR Quad Band GPRS
- RoHS Compliant
- SIM SIM Access Profile
- Automotive Temperature Range
- USB 2.0 High Speed Compatible
- Extended RF Sensitivity
- Embedded TCP/IP Stack



The new Telit HE920 is a tri-band HSPA module representative of the new Telit Automotive form factor xE920.

The HE920 is a 3.5G wireless data module offering HSPA connectivity with download speeds up to 14.4 Mbps, upload speeds up to 5.76 Mbps and manufactured under ISO TS16949. Designed for use in the most demanding of automotive applications, the HE920 also offers ruggedized LGA packaging with an increased robustness and cost reducing mating solution. Two HE920 regional versions, covering different series of HSPA bands, are available whether your market is Europe, North America, South America, Asia or Australia. HE920 in pairs with its LTE companion LE920 offers an Automotive LGA family in a common package. Developers can take advantage of Telit's xE920 Unified Form Factor that enables a "design once, use anywhere" strategy. Design your application once and choose the technology that best fits the regional requirements for a truly seamless deployment. The HE920 is also fully backwards compatible to existing EDGE and GSM/GPRS networks through integrated quad-band radios. Additional features such as, integrated TCP/IP and UDP stack, one DAC and a two ADC channel provide extended functionality, adding value to the end application without adding cost. Moreover HE920 is also available with embedded GPS/GLONASS receiver and Antenna Diversity. The extensive interface set, which includes analog and digital audio, UARTs, USB, PCM and user definable GPIOs, provides ease of integration of peripherals and actuators.

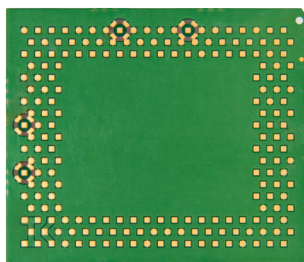
The HE920 is also compliant with eCall EU Directive. The eCall project is sponsored by the European Commission and it's based on the EU directive E112. It is intended to adopt a black box device installed inside vehicles, wirelessly connected to Emergency Centers. In case of an emergency such as an accident or by user intervention, the black box and its sensors will send information about the event to such centers, with the chance to establish a voice call for safety measures.

As part of Telit's commitment to protecting the customer investment in developing and deploying Telit based solutions, the HE920 boasts a range of functions for over-the-air maintenance and management of firmware and application software on the module. As a part of Telit's corporate policy of environmental protection, all Telit products comply to the RoHS (Restriction of Hazardous Substances) directive of the European Union (EU Directive 2002/95/EG).

HE920 Variants								
Variant name	Upload	Download	Frequencies	Features				
	HSUPA (Mbps)	HSDPA (Mbps)	UMTS HSPA+ bands (MHz)	GSM GPRS EDGE Quad-band	Rx Diversity	Data	Voice	GPS
Europe, Australia, Israel, Brazil markets								
HE920-EU	5.76	14.4	850/900/2100	■	■	■	■	■
North America market								
HE920-NA	5.76	14.4	850/1700/1900	■	■	■	■	■

HE 920 Family

Embedded



actual size

Product features

- HSPA 14.4 Mbps
- UMTS/HSPA (WCDMA/FDD):
 - @ 850/900/2100 (EU)
 - @ 850/1700/1900 (NA)
- Quad-band EGSM 850/900/1800/1900
- GPRS multi-slot class 12
- EDGE multi-slot class 12
- Manufactured under TS16949 Quality specifications
- Optional GPS/Glonass receiver
- Dimensions: 34 x 40 x 2.8 mm
- Temperature Range
 - 40°C to +85°C (operational range)
 - 40°C to +85°C (storage)
- RX Diversity

Interfaces

- 198-pin LGA Interface
- 1.8 / 3V UICC SIM card interface
- Digital and Analog Audio, GPIOs, 1 D/A and 2 A/D converters
- USB 2.0 HS OTG interface
- RF pad, RX Diversity pad, GPS/Glonass Antenna pad
- USB, UART

Approvals

- CE, GCF, PTCRB, FCC, IC

Electrical

- Output power
 - Class 4 (2 W, 33 dBm) @ GSM 850 / 900
 - Class 1 (1 W, 30 dBm) @ GSM 1800 / 1900
 - Class 3 (0.25 W, 24 dBm) @ UMTS
 - Class E2 (0.5 W, 27 dBm) @ EDGE 850 / 900
 - Class E2 (0.4 W, 26 dBm) @ EDGE 1800 / 1900
- Supply voltage
 - Nominal: 3.8 VDC
 - Range: 3.4 - 4.2 VDCs

Data

- HSPA
 - Downlink up to 14.4 Mbps
 - Uplink up to 5.76 Mbps
- WCDMA
 - Downlink/uplink up to 384 kbps
- EDGE
 - Downlink up to 236.8 kbps
 - Uplink up to 236.8 kbps
- GPRS
 - Downlink up to 85.6 kbps
 - Uplink up to 85.6 kbps
 - PBCCH support
- CSD

Additional features

- Voice and SMS
- Remote SIM Access
- TCP stack with IP and UDP protocols
- Standard and extended AT command set
- Various operating system drivers
- 3GPP release 7 compliant
- Control via AT commands according to 3GPP TS27.005, 27.007 and customized Telit AT commands
- Serial port multiplexer 3GPP TS27.010

Approvals

- RoHS Compliant
- CE, GCF (Europe)
- FCC, PTCRB, IC (North America)

Order No.

Please contact your Telit representative for order codes and all further information

Copyright © 2012, Telit
Subject to changes in technology,
design and availability

Distributed by:

Telit® wireless solutions

Telit Communications S.p.A.
Via Stazione di Prosecco, 5/B
I-34010 Sgonico (Trieste), Italy
Tel +39 040 4192 200
Fax +39 040 4192 289
E-Mail: EMEA@telit.com

Telit Wireless Solutions Inc.
3131 RDU Center Drive, Suite 135
Morrisville, NC 27560, USA
Tel +1 888 846 9773 or +1 919 439 7977
Fax +1 888 846 9774 or +1 919 840 0337
E-Mail: NORTHAMERICA@telit.com

Telit Wireless Solutions Inc.
Rua Cunha Gago, 700 - cj 81, Pinheiros
São Paulo - SP, 05421001, Brazil
Tel +55 11 2679 4654
Fax +55 11 3031 5051
E-Mail: LATINAMERICA@telit.com

Telit Wireless Solutions Co., Ltd.
12th Fl., Shinyoung Securities Bld.
34-12, Yeouido-dong, Yeongdeungpo-gu
Seoul, 150-884, Korea
Tel. +82 2 368 4600
Fax +82 2 368 4606
E-Mail: APAC@telit.com

www.telit.com

www.telit.com/ebook

www.telit.com/techforum

www.telit.com/facebook

www.telit.com/twitter

